



## **KRAV BOCA**

**- LIVE 2024 -**

**P.2** – Technical rider

**P.5** – Lights rider

**P.6** – General conditions

**P.7** – Annexes / Photos

### **- CONTACTS -**

**Technique** : Myrtille - 06 33 63 39 65

**Lumières** : Vincent - 06 21 90 58 10

**Drums** : Azzedine - 06 11 74 69 21

**Cerceau** : Louna - 07 82 52 59 77

**Admin** : Adrien - 06 58 47 79 49

**Général** : Paul - 06 15 27 75 71



## - TECHNICAL RIDER -

KRAV BOCA is a band from Toulouse (France) with 8 members and 1 driver.  
Drums, Guitar, Mandoline, 2 Singers, 2 performers, 1 sound engineer.

**This is an optimal technical rider, some elements can be adapted within your means. Please inform us about your gear available before the gig's day.**

### MICROPHONES

|    | Musician | Source                             | Micro                                   | Stand |
|----|----------|------------------------------------|-----------------------------------------|-------|
| 1  | Azzedine | KICK IN                            | Beta 91A                                | -     |
| 2  |          | KICK OUT                           | D6                                      | Small |
| 3  |          | SNARE TOP                          | SM 57                                   | Small |
| 4  |          | SNARE BOTTOM                       | SM57                                    | Small |
| 5  |          | TOM                                | D2 / E 604                              | Rim   |
| 6  |          | TOM                                | D4 / E 604                              | Rim   |
| 7  |          | OH                                 | KM184 / C414                            | High  |
| 8  |          | OH                                 | KM184 / C414                            | High  |
| 9  |          | SAMPLER L                          | DI                                      | -     |
| 10 |          | SAMPLER R                          | DI                                      | -     |
| 11 |          | HI HAT                             | KM 184                                  | Small |
| 12 |          | BASS<br>(sub out from the sampler) | DI                                      | -     |
| 13 | Paul     | MANDOLINE                          | DI                                      | -     |
| 14 |          | MANDOLINE FX                       | (mandoline track copy into the console) | -     |
| 15 | Nino     | GTR                                | SM 57                                   | Small |
| 16 |          | GTR                                | E906                                    | Small |
| 17 | Rudy     | VOX 1                              | <b>HF</b> Beta58 / SM 58                | -     |
| 18 | Adrien   | VOX 2                              | <b>HF</b> Beta58 / SM 58                | -     |
| 19 | Nino     | BACKING VOX                        | SM 58                                   | High  |
| 20 | Paul     | BACKING VOX                        | SM 58                                   | High  |
| 21 | Louna    | BACKING VOX                        | SM 58                                   | High  |

**If possible, the two singers are asking for good quality wireless microphones.**  
If it's not possible, we need AT LEAST 10 metres XLR cables .

## FOH / DIFFUSION

Please provide a sound system adapted to the venue, and set up before our arrival. The sound from the front should cover the room evenly and of adequate sound with a consistent bass power. The general electrical alimentation have to be clean from any parasites

The venue must provide a welcoming sound technician to help ours. The control room should ideally be located in the center and 2/3 of the room. Please provide a professional quality console. If the console is analog, please provide a compression rack and an insert reverb for vocals.

- Minimum power for the sound system :  
Indoor : 2 kw - subwoofer included  
Outdoor : 6 kw + 2 kw subwoofer

## WEDGES

Thanks for providing:

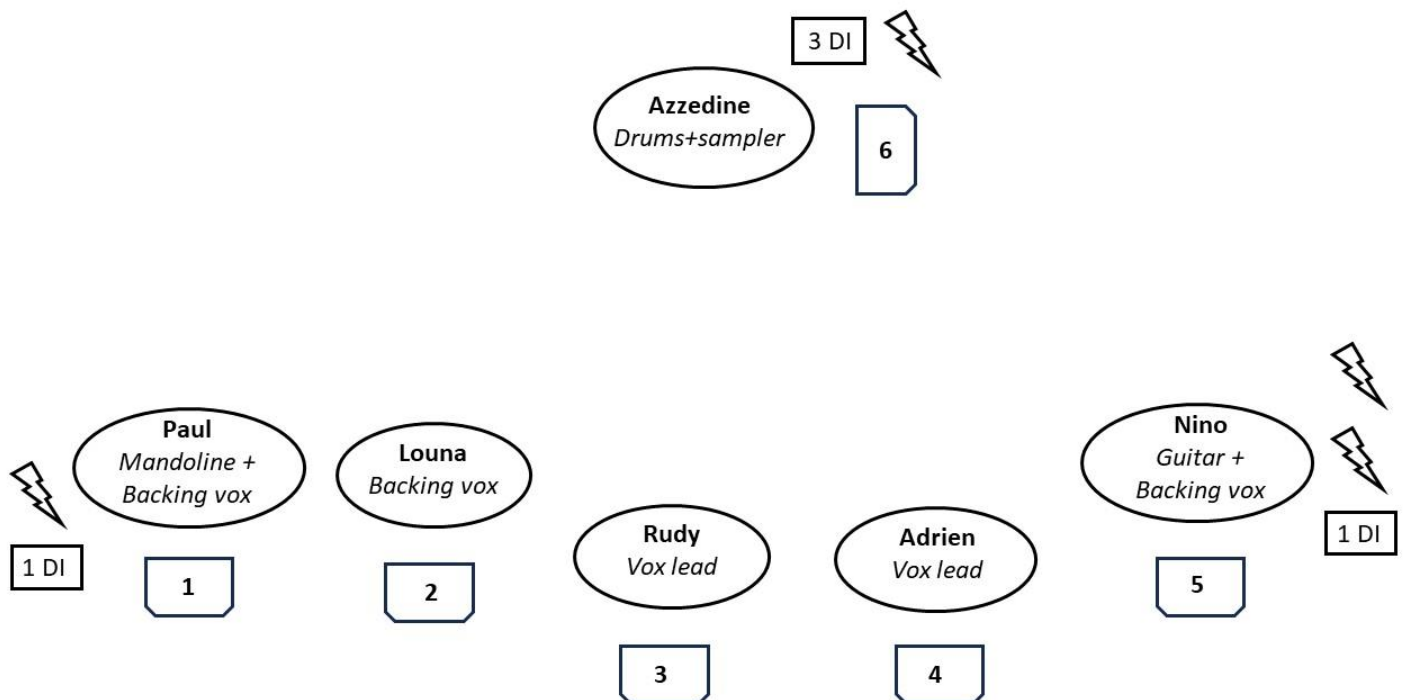
- 6 wedges on stage, plugged in 6 independents circuits.
- A wedge technician in case of onstage mixing table.

## BACKLINE

Please make available 1 guitar cabinet (Marshall Mr1960A, Marshall MX412AR or Orange PPC412) to plug our amp head.

The band brings: complete drums, Roland Sampler (DI stereo system), guitar pedalboard, amplifier head for guitar, mandoline pedalboard (on DI).

## PLAN DE SCÈNE



## **PERFORMER 1 – DANCE / VISUAL EFFECTS**

A performer with a visual performance is also on stage. His show provides:

- Visuals effects with an electrical grinder (small and inoffensive projections – no specific plug to provide)
- A small torch, linked by two chains, controlled by rings (Annexes\*)

If the venue cannot afford this, please let us know about it at least one month before.

## **PERFORMER 2 – AERIAL HOOP**

The Aerial Hoop performance is also a part of the KRAV BOCA show.

- The performance has to be set above the stage. (not the audience)
- The attachment point must be in the middle of the stage, the hoop must be slightly offset on one of the two sides (left side).

We are fully independent within the hoop gear. (hoop, straps ,snap hooks, ropes).

We only require a ladder around 4 to 8 metres, to have acces to the attachment point.

Regarding backline changes (if there is any), the hoop must be put in place during KRAV BOCA soundcheck. At the end of the soundcheck, we raise the hoop aside with the help of a rope. Just before our show, we detach the rope to get the hoop on his initial stage position.

### Technical details- hoop :

- Points of attachment (grill / beam / portico / truss)  
Cannot be hung on a light or swinging truss, a dedicated fixed truss is required
- 2 different hooks systems:  
pulley ou static (photos)
- Ground perimeter: 4m2
- Minimum height: 4m50



## - LIGHTS RIDER -

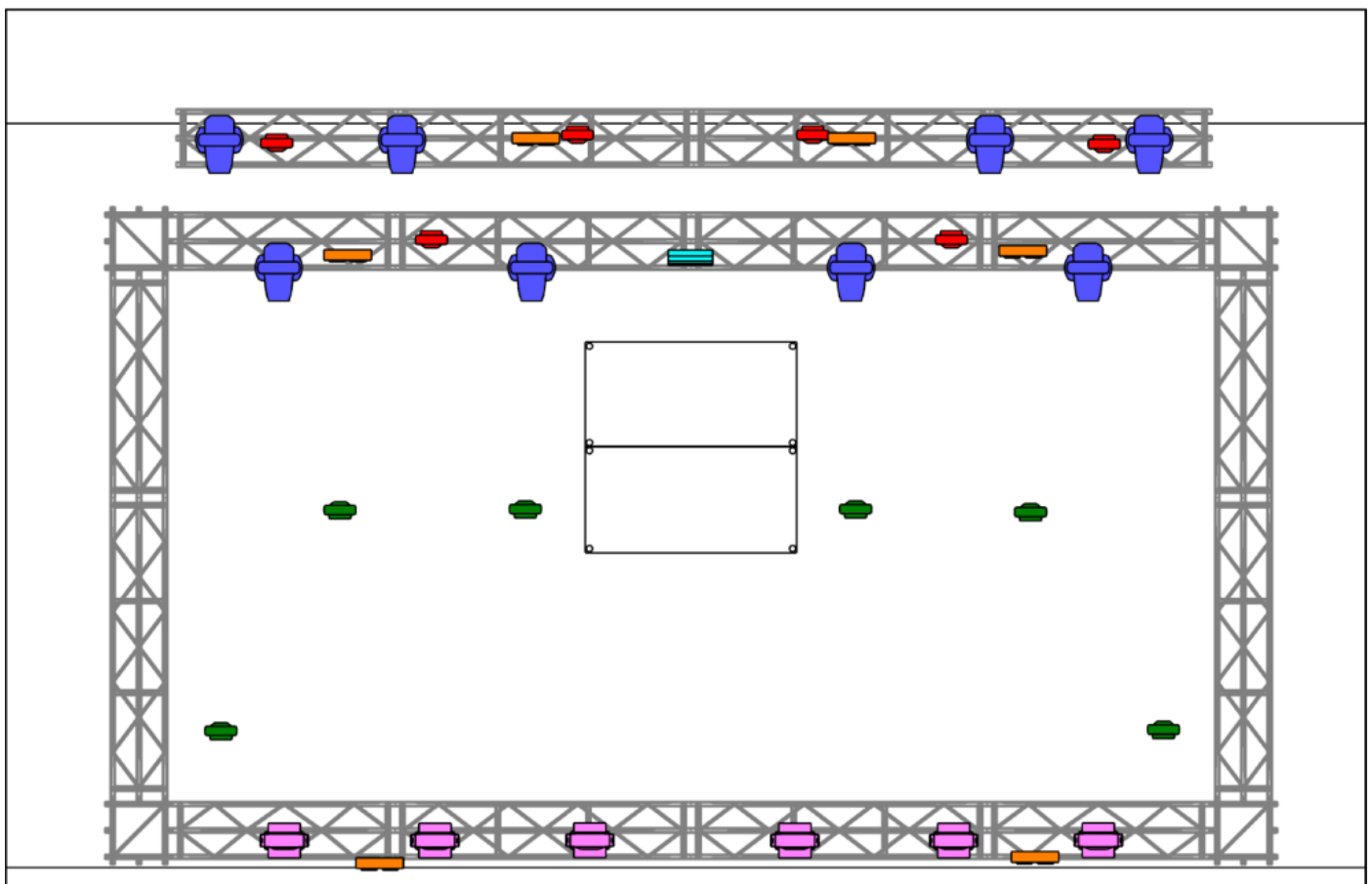
The group travels punctually with a light engineer. But unless otherwise specified, the venue must provide a light engineer.




Thank you in advance for sending us the reception technical sheet from the venue within the light plot and the machines patches available for the concert. If possible, we are required by a .MVR of the room.

Please provide a grandma2 or 3 controller, version 3.9.60.XX.

The fog machine is primordial for the show, please provide an adapted machine.

### LIGHT PLOT



| Symbol key                                                                          |         |                                                                                     |           |
|-------------------------------------------------------------------------------------|---------|-------------------------------------------------------------------------------------|-----------|
|  | Spots   |  | Wash Face |
|  | Wash    |  | Wash Sol  |
|  | Blinder |  | Strobe    |



## **- GENERAL CONDITIONS -**

### **CATERING & LODGES**

For the food, please provide 9 hot meals, including 2 vegetarian diets. Depending on the time, the band reserves the right to eat before or after his concert.

For the dressing rooms, please make available for the band:

- Coffee and tea
- Fruits and chocolate bars.
- 24 beers pack (minimum)
- Dark Rum or Vodka bottle (high quality)
- Bottles of water ( 6 x1,5L ou 24 x 50cl)

### **SLEEPING**

For logistical reasons, all Krav Boca staff must be accommodated in the same place for the night. (with the possibility of parking the tour vehicle nearby, in a safe zone)

Preferably at the hotel for the 9 people with:

- 1 double room
- 2 twin rooms
- 1 triple room

If the sleeping place's an appartement, a studio or an hostel :

- 9 mattresses, a quiet place, and clean sheets.
- Shower and toilets acces.

### **PHOTOGRAPHY CREDITS/IMAGE RIGHTS**

The bands has no problem with accredited photographers taking images of the performance.

BUT: Each photographers has to commit themselves to send at least one or two photos on High Def chose by the band. And the integrality of the photos on low def if the band asked for it.

### **CONTACTS**

- Technic : Myrtille - 06 33 63 39 65
- Lights : Vincent - 06 21 90 58 10
- Drums : Azzedine - 06 11 74 69 21
- Hoop : Louna - 07 82 52 59 77
- Admin : Adrien - 06 58 47 79 49
- General : Paul - 06 15 27 75 71
- Mail : kravboca@gmail.com



**- PERFORMANCE ANNEXES -**



