



## **KRAV BOCA**

**- LIVE 2024 -**

**P.2** – Technical rider

**P.5** – Lights rider

**P.6** – General conditions

**P.7** – Annexes / Photos

### **- CONTACTS -**

**Technique** : Myrtille - 06 33 63 39 65

**Lumières** : Vincent - 06 21 90 58 10

**Drums** : Azzedine - 06 11 74 69 21

**Cerceau** : Louna - 07 82 52 59 77

**Admin** : Adrien - 06 58 47 79 49

**Général** : Paul - 06 15 27 75 71



## - TECHNICAL RIDER -

KRAV BOCA is a band from Toulouse (France) with 8 members and 1 driver.  
Drums, Guitar, Mandoline, 2 Singers, 2 performers, 1 sound engineer.

**This is an optimal technical rider, some elements can be adapted within your means. Please inform us about your gear available before the gig's day.**

### MICROPHONES

	Source	Micro	Pied	Musicien
1	KICK IN	Beta 91A	-	Azzedine
2	KICK OUT	D6	Small	
3	SNARE TOP	SM 57	Small	
4	SNARE BOTTOM	SM57	Small	
5	HI HAT	SM81	Small	
6	H TOM	D2 / E 604	Rim	
7	/	/	/	
8	F TOM	D4 / E 604	Rim	
9	OH L	KM184 / SM81	High	
10	OH R	KM184 / SM81	High	
11	SPL L	DI	-	
12	SPL R	DI	-	
13	SPL BASS (sub out du sampler)	DI	-	
14	MANDOLINE	DI	-	Paul
15	GTR	SM 57	Small	Nino
16	GTR	E906	Small	
17	VX LEAD 1	HF Beta58 / SM 58	-	Rudy
18	VX LEAD 2	HF Beta58 / SM 58	-	Adrien
19	BACKING VX J	SM 58	High	Paul
20	BACKING VX M	SM 58	High	Louna
21	BACKING VX C	SM 58	High	Nino

## FOH / DIFFUSION

The venue must provide a welcoming sound technician to help ours.

Please provide a sound system adapted to the venue, and set up before our arrival.

If the console is analog, please provide a compression rack for vocals.

## WEDGES

Thanks to provide :

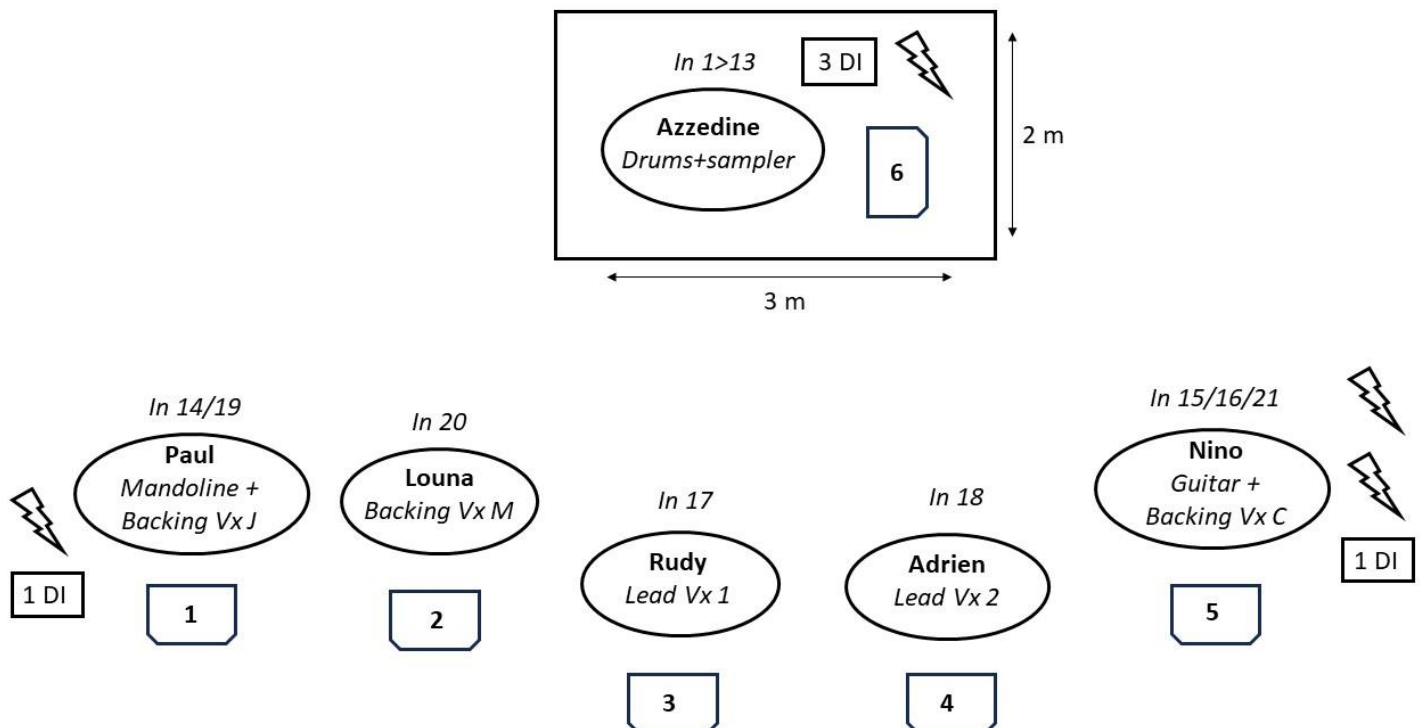
- 6 wedges on stage, plugged in 6 independents circuits.
- A wedge technician in case of onstage mixing table.

## BACKLINE

Please prepare risers of 3mx2m for our drummer.

The band brings: complete drums, Roland Sampler (DI stereo system), guitar amp, guitar pedalboard, mandoline pedalboard (on DI).

## STAGE PLAN



## **PERFORMER 1 – DANCE / VISUAL EFFECTS**

A performer with a visual performance is also on stage. His show provides:

- Visuals effects with an electrical grinder (small and inoffensive projections – no specific plug to provide)
- A small torch, linked by two chains, controlled by rings (Annexes\*)

If the venue cannot afford this, please let us know about it at least one month before.

## **PERFORMER 2 – AERIAL HOOP**

The Aerial Hoop performance is also a part of the KRAV BOCA show.

- The performance has to be set above the stage. (not the audience)
- The attachment point must be in the middle of the stage, the hoop must be slightly offset on one of the two sides (left side).

We are fully independent within the hoop gear. (hoop, straps ,snap hooks, ropes).

We only require a ladder around 4 to 8 metres, to have acces to the attachment point.

Regarding backline changes (if there is any), the hoop must be put in place during KRAV BOCA soundcheck. At the end of the soundcheck, we raise the hoop aside with the help of a rope. Just before our show, we detach the rope to get the hoop on his initial stage position.

### Technical details- hoop :

- Points of attachment (grill / beam / portico / truss)  
Cannot be hung on a light or swinging truss, a dedicated fixed truss is required
- 2 different hooks systems:  
pulley ou static (photos)
- Ground perimeter: 4m2
- Minimum height: 4m50



## - LIGHTS RIDER -

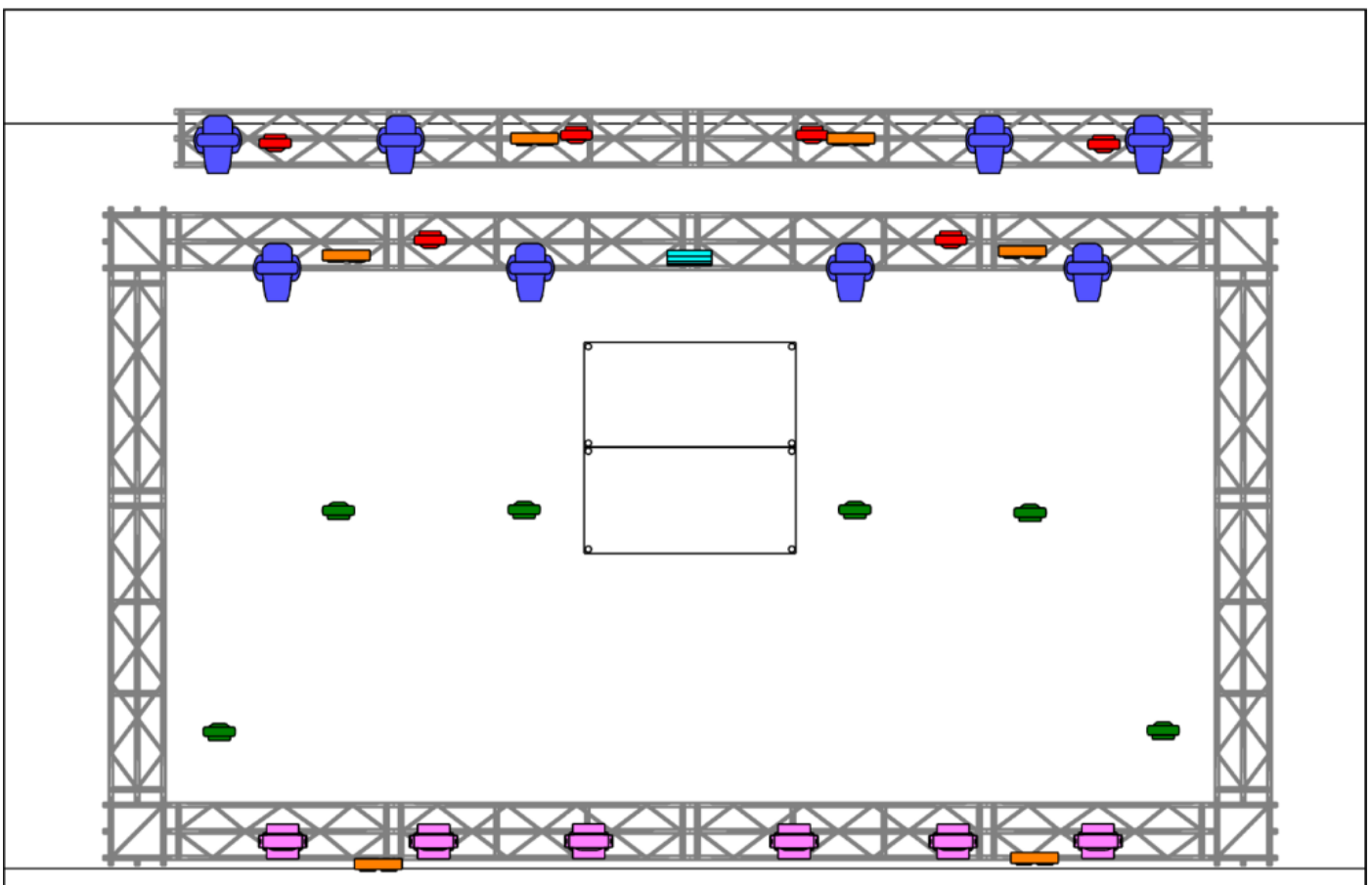
The group travels punctually with a light engineer. But unless otherwise specified, the venue must provide a light engineer.

Thank you in advance for sending us the reception technical sheet from the venue within the light plot and the machines patches available for the concert. If possible, we are required by a .MVR of the room.




Please provide a grandma2 or 3 controller, version 3.9.60.XX.

The fog machine is primordial for the show, please provide an adapted machine.

### LIGHT PLOT



#### Symbol key

	Spots		Wash Face		Blinder
	Wash		Wash Sol		Strobe



## - GENERAL CONDITIONS -

### CATERING & LODGES

For the food, please provide 9 hot meals, including 2 vegetarian diets. Depending on the time, the band reserves the right to eat before or after his concert.

For the dressing rooms, please make available for the band:

- Coffee and tea
- Fruits and chocolate bars.
- 24 beers pack (minimum)
- Dark Rum or Vodka bottle (high quality)
- Bottles of water ( 6 x1,5L ou 24 x 50cl)

### SLEEPING

For logistical reasons, all Krav Boca staff must be accommodated in the same place for the night. (with the possibility of parking the tour vehicle nearby, in a safe zone)

Preferably at the hotel for the 9 people with:

- 1 double room
- 2 twin rooms
- 1 triple room

If the sleeping place's an appartement, a studio or an hostel :

- 9 mattresses, a quiet place, and clean sheets.
- Shower and toilets acces.

### PHOTOGRAPHY CREDITS/IMAGE RIGHTS

The bands has no problem with accredited photographers taking images of the performance.

BUT: Each photographers has to commit themselves to send at least one or two photos on High Def chose by the band. And the integrality of the photos on low def if the band asked for it.

### CONTACTS

- Technic : Myrtille - 06 33 63 39 65
- Lights : Vincent - 06 21 90 58 10
- Drums : Azzedine - 06 11 74 69 21
- Hoop : Louna - 07 82 52 59 77
- Admin : Adrien - 06 58 47 79 49
- General : Paul - 06 15 27 75 71
- Mail : kravboca@gmail.com



**- PERFORMANCE ANNEXES -**



